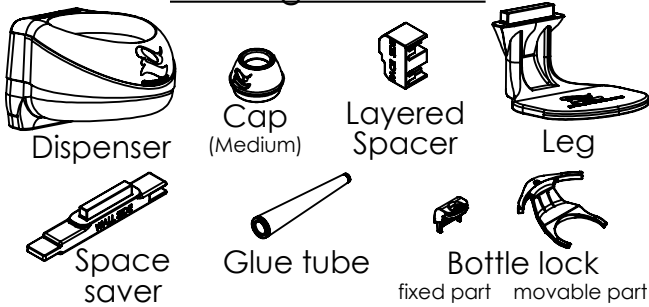


# Body & Hair Care Dispenser Horizontal / Layered installation Installation instructions



## Package contents



## Safety points

1. Keep out of reach of children
2. To be used with hair shampoo, hair conditioner, body soap, body lotion, hair cream, hand cream (not intended for high acidity liquids)
3. Maximum bottle size for dispenser - 950ml
4. Dispenser should not be left empty of cleaning products for long periods

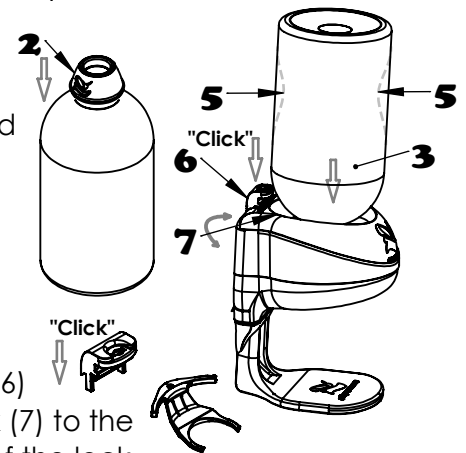
## Loading the dispenser and cap replacement for disposable bottle

(first loading after 24 hours)

1. Remove the cap from the purchased bottle
2. Install the dispenser cap (2) included in the package to the bottle
3. To Load the bottle onto the dispenser the bottle should be tilted and inserted fully in place
4. **To replace the bottle, the bottle should be tilted and removed from the dispenser**
5. Usage instructions: Squeeze the bottle (5) until the liquid comes out of the bottom of the dispenser

### Use of Bottle Lock (Optional)

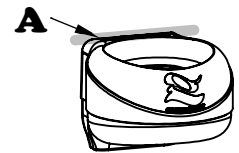
6. Insert the fixed part of the bottle lock into the slot on the dispenser (6)
7. After loading the bottle, attach the movable part of the bottle lock (7) to the dispenser cap and turn it right or left until it locks into the fixed part of the lock



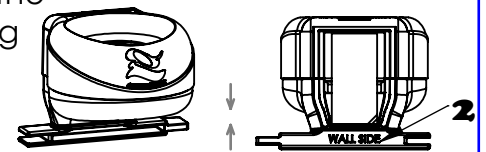
## Installation instructions

### 1 First Dispenser installation

Carefully clean the area of oils and dirt and dry thoroughly  
Draw an upper horizontal line on the wall (A)



- 2 Connect the space saver (2) included in the package to the base at the bottom of the dispenser. Ensure that the writing "WALL SIDE" (2) is facing the back of the dispenser



- 3 Remove the seal from the double sided tape (B) at the back of the dispenser

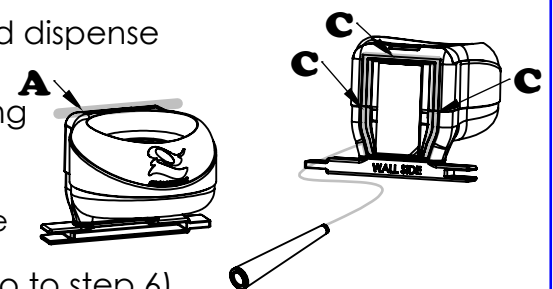


- 4 Open the tube of glue (included in the package) and dispense the content evenly on the track (C) at the back of the dispenser. Press the dispenser into place according to illustration (A)

Press and apply strong pressure for 10 seconds !

The glue tube should be kept in a dark place at temperature between 5-25 degrees celsius

(to attach additional dispensers to the one installed go to step 6)



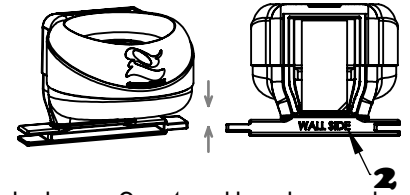
- 5 **You must allow 24 hours to completely dry prior to loading a disposable bottle !**  
**(a bottle should not be installed until the glue has completely dried)**

After 24 hours remove the space saver (2) from the dispenser and attach the included leg

# Body & Hair Care Dispenser Horizontal / Layered installation Installation instructions

## 6 Attaching additional dispensers to the one installed

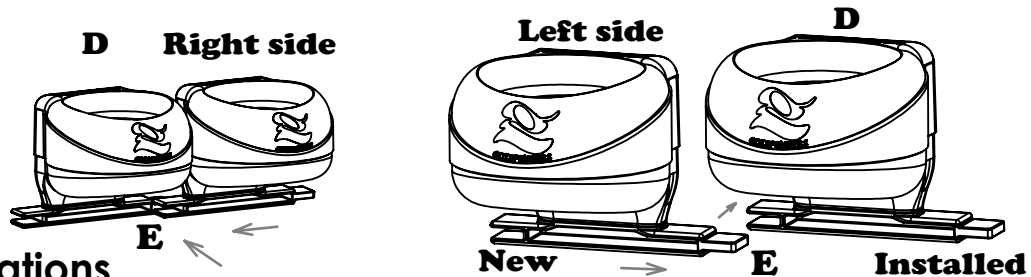
Ensure that the area to the left or right to the dispenser which was glued (D) is clean of oil and dirt and completely dry. Connect the included space saver (2) to the seating at the base of the dispenser, Ensure that the writing "WALL SIDE" (2) is facing the back of the dispenser



### Horizontal Installation

To attach the new dispenser to the installed dispenser (D), repeat steps 3 +4, attach and connect the space savers to each other (E), afterwards press to the wall and apply strong pressure for 10 seconds!

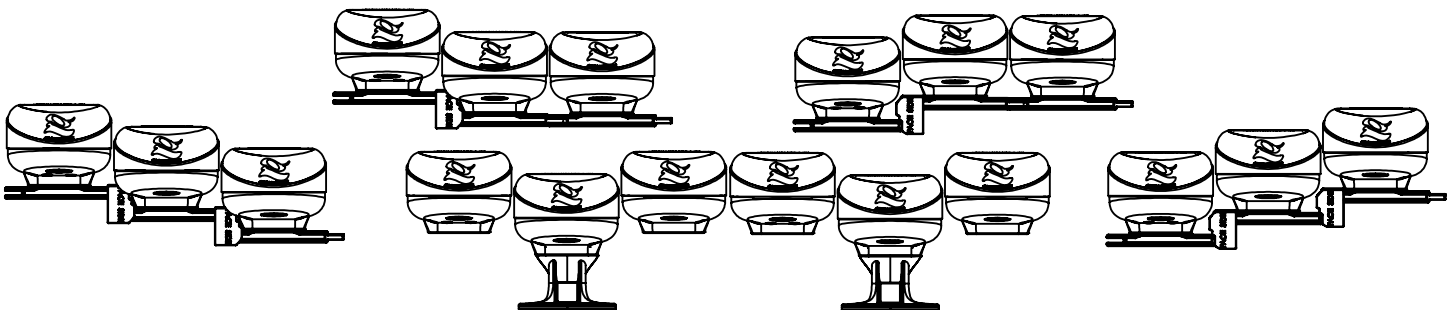
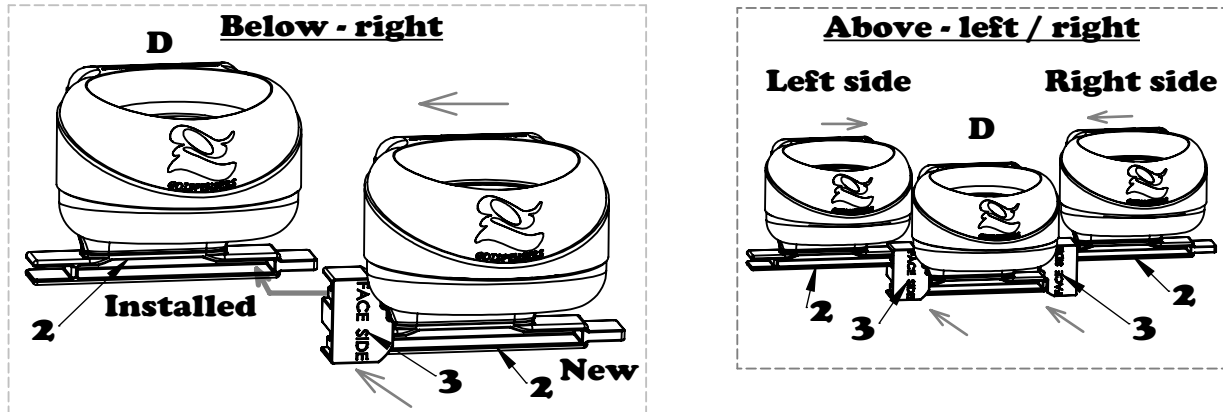
(repeat step 6 for each additional dispenser you wish to install, finally move to step 7)



### Layered installations

Attach the layered spacer (3) included in the package to the space saver (2) attached to the new dispenser. Make sure that the inscription "FACE SIDE" (3) is facing the user (the layered spacer may be installed above or below, as well as to the left or right according to the attached illustration), repeat steps 3 +4, Attach the new dispenser to the installed dispenser in such a manner that the layered spacer (3) will attach and connect to the space saver (2) in the installed dispenser (D) afterwards press to the wall and apply strong pressure for 10 seconds!

(repeat step 6 for each additional dispenser you wish to install, finally move to step 7)



## 7 You must allow 24 hours to completely dry prior to loading a disposable bottle! a bottle should not be installed until the glue has completely dried

After 24 hours, remove the space savers (2&3) from the dispenser and attach the included leg

For installation videos and placing orders please visit our website

***gd*dispensers.com**